

# Modular Buildings

Portable Cabins & Containers

“Quick and affordable modular solutions”



ACCOMMODATIONS

PORTABLE OFFICES

PORTABLE TOILETS

- Prepainted Frames
- Flat Pack & RTA kit
- Modular & Portable
- Customisable Products
- World-Wide Network
- Customer Assistance

## 1. FOREWORD

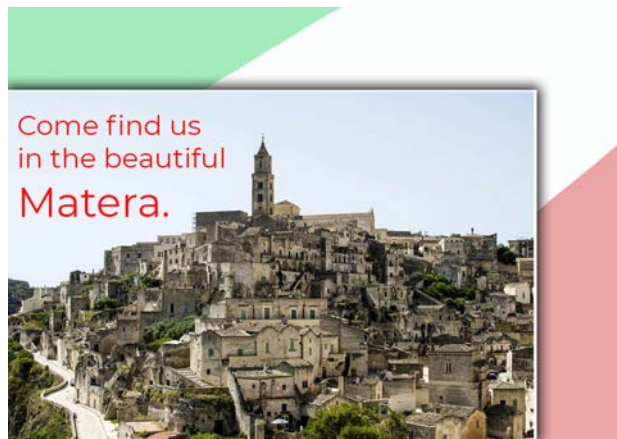
Thanks for choosing an EDILMETAS product, output of expertise, constant improving, quality assurance, accurate projects. We build respecting H&S standards, environment and People.

This brochure has been elaborated according to regulations about design, building, commercialising and the correct use of our product. Specifics may change at any time.

We aim to deliver the best service to our customer, informing them about the correct use of our product. We recommend to read carefully the booklet before installing and using this product.

Our Prefabricated and Modular Buildings are worldwide famous for easy assembling, easy access and strong attention to details.

MB MODULAR BUILDINGS is a brand by:  
EDILMETAS SRL - VIA PIRELLI  
MATERA - ITALY  
75100



PRE-PAINTED  
FRAMES

MODULAR  
UNITS

EASY  
TO ASSEMBLE



**PROPRIETARY FRAME SYSTEM**

marked with asterisk (\*)  
meaning on request

**1.1 Dimensions (standard)**

Ref.	External Measures (mm)	Internal Measures (mm)	Weight (Kg)
MON314STAN	3140x2400xh2680	3000x2200xh2400	600
MON414STAN	4140x2400xh2680	4000x2200xh2400	800
MON514STAN	5140x2400xh2680	5000x2200xh2400	1000
MON614STAN	6140x2400xh2680	6000x2200xh2400	1200
MON814STAN	8140x2400xh2680	8000x2200xh2400	1600
MON1014STAN	10140x2400xh2680	10000x2200xh2400	2000
MON1214STAN	12140x2400xh2680	12000x2200xh2400	2400

Non-standard height

Ref.	External Measures (mm)	Internal Measures (mm)
H3000	3280	3000
H2700	2980	2700
H2200	2480	2200

Toilet

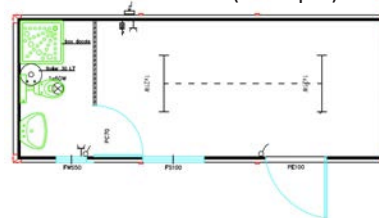
Ref.	Lateral Toilet	Weight (Kg)
V + L	Toilet+Sink; partition wall with door + lock, hopper Window mm 500x500; Cold water only, light and switch .	+100
V + L + D	Toilet+Sink+shower; partition wall with door + lock, hopper Window mm 500x500; 30 litre boiler, light and switch.	+150

Ref.	Central Toilet	Weight (Kg)
V + L CEN	Toilet+Sink; partition wall with door + lock, hopper Window mm 500x500; Cold water only, light and switch .	+200
V + L + D CEN	Toilet+Sink+shower; partition wall with door + lock, hopper Window mm 500x500; 30 litre boiler, light and switch.	+250

Central Toilet (example)



Lateral Toilet (example)



\*Other Dimensions available on request

## 1.2 General Information

<b>Structure:</b>	The frames are made of galvanized pre-painted steel RAL 9002 (Thickness 1,5 mm), from galvanized coils (standard: UNI 5753-75);
<b>Base:</b>	The base frame is made of galvanized pre-painted steel RAL 9002 (Thickness 1,5 mm); with a galvanized steel sheet (thickness 0,6 mm). Over the slab, a 18mm thick wood panel and an overlay PVC floor 2mm thick (waterproof). Fire resistant wood-cement base is available on request* Sandwich panels insulation / MW available on request*.
<b>Walls and Partitions</b>	PUR insulated sandwich panels (thickness 40 mm), supporting steel structure thickness 0,4 mm according to UNI EN 10169, with PUR insulation D=38-40 Kg/mc Transmittance U=0,55 W/mqK. Mineral wool sandwich panels insulation or other thickness on request*
<b>Roof</b>	PUR insulated sandwich panels (thickness 30 or 40 mm*), Supporting steel structure thickness 0,4 mm according to UNI EN 10169, with PUR insulation D=38-40 Kg/mc. Upon which, a corrugated galvanized steel sheet h=55 mm is laid. Mineral wool insulation or other thickness on request*
<b>Doors, Windows and Fixtures</b>	Aluminium frame (white RAL 9010) complete of hardware and all use accessories. Glazing (thickness 4 mm), protection bars, handles and locks. - Standard door dim. 1.050xh2.100 mm ( 890xh2.060 mm); - Double sliding window dim. 1.050xh1.100 mm - hopper Window dim. 500x500 mm* Other windows and fixtures* (uPVC; Timber-Aluminium Clad)

Note:

Liftable with a crane, 4 points lifting eyes.

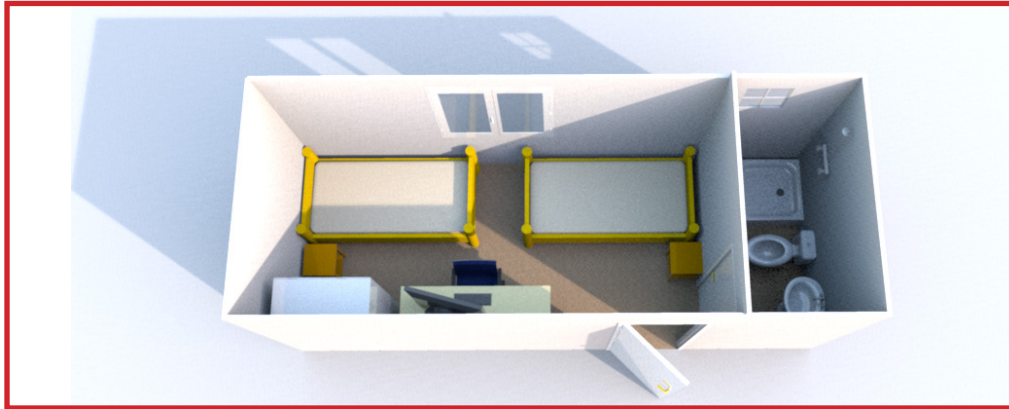
Water draining system on both the short sides.

<b>Electrical System*</b>	Standard: Earth, and circuit breaker. Three phase on request*
<b>Plumbing*</b>	Made with exposed piping. Floor or Wall Drain. All independent. The customer will link them together and convey them.



### 1.3 Layout

We can manufacture your own layout, just send us a floor plan or choose between more than 100 preset configurations.



### 1.4 Load capacity

*Maximum load on the roof (static) = 100 kg/sqm - Non walkable*

*Maximum load on the base (static)= 150 kg/sqm*

*Maximum load capacity can be improved if required\**

### 1.5 Disposal

*In case of removal, the owner or the holder must provide the correct disposal according to the local regulations.*

*We suggest to entrust a specialised company for carriage and dumping.*

*Take care about the environment.*

*————— Italian quality —————*

*Prefabricated and Modular Buildings are designed and manufactured in our factory. We respect all regulations, our employees and H&S standards.*

*————— EU Standards —————*

*Suggesting further anchorage for caution and checking the local regulation.*

*The use of the lifting eye is only for small and non frequent movements.*

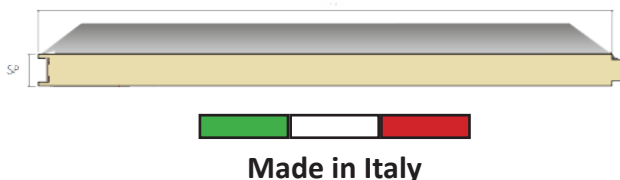
*Roof is non-walkable. To stack or more storey layout contact an Engineer and check local regulations. We suggest **do not stack** modular buildings without building a steel structure and using anchorage.*

## 2 THE COMPONENTS

Every material we use for our buildings is certified, we guarantee high standards.

### 2.2 Panels (PUR insulation)

Our Panels are Made in Italy, the right compromise to guarantee efficiency and durability. The supporting sandwich panel, is white/grey (RAL 9002). Paintable or covered.



	sp. 30mm	sp. 40mm
W/m <sup>2</sup> K	0,62	0,55
Kcal/m <sup>2</sup> h °C	0,53	0,47

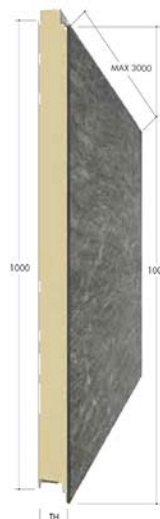
The panel structure is constituted by metal sheet and is best option for walls and partitions. Respecting EN 14509:2013.

Characteristics	Class	Standards
Insulation	PUR	EN 14509
Density	40 Kg/m <sup>3</sup>	EN 14509
Fire Reaction	F	UNI EN 14509 EN 13501-1

### 2.3 Panels (MW insulation\*)

SOUNDPROOFING, SOUND-ABSORBING MINERAL FIBRE WALL PANEL.

Density of insulation  
 Density: 100 Kg/m<sup>3</sup> ±10%.  
 Other densities optionally available.  
 Sound-absorption  
 Thickness mm 50 (W/m<sup>2</sup> K 0,72): AW = 0.90  
 Thickness mm 80 (W/m<sup>2</sup> K 0,61): AW = 0.95  
 Thickness mm 100 (W/m<sup>2</sup> K 0,38): AW = 0.95  
 -----  
 Thickness mm 50 (W/m<sup>2</sup> K 0,72): RW = 31 dB  
 Thickness mm 80 (W/m<sup>2</sup> K 0,61): RW = 34 dB  
 Thickness mm 100 (W/m<sup>2</sup> K 0,38): RW = 35 dB



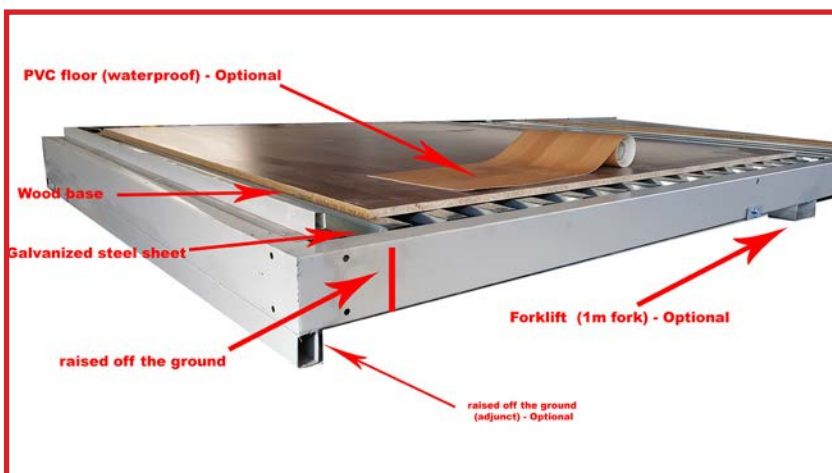
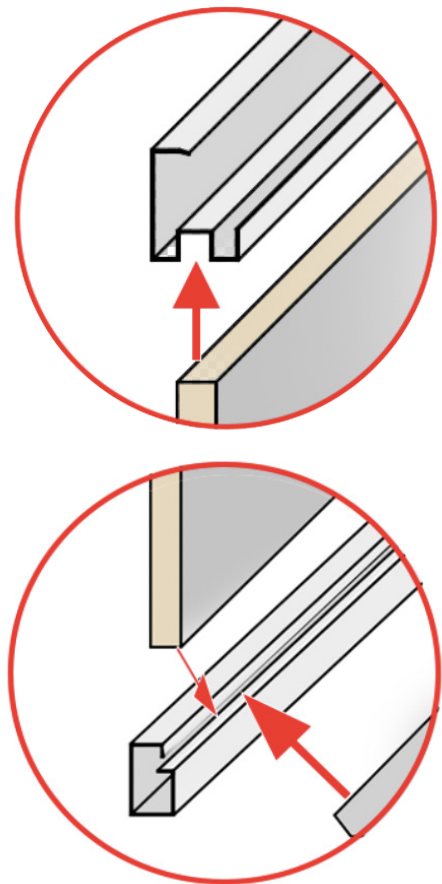
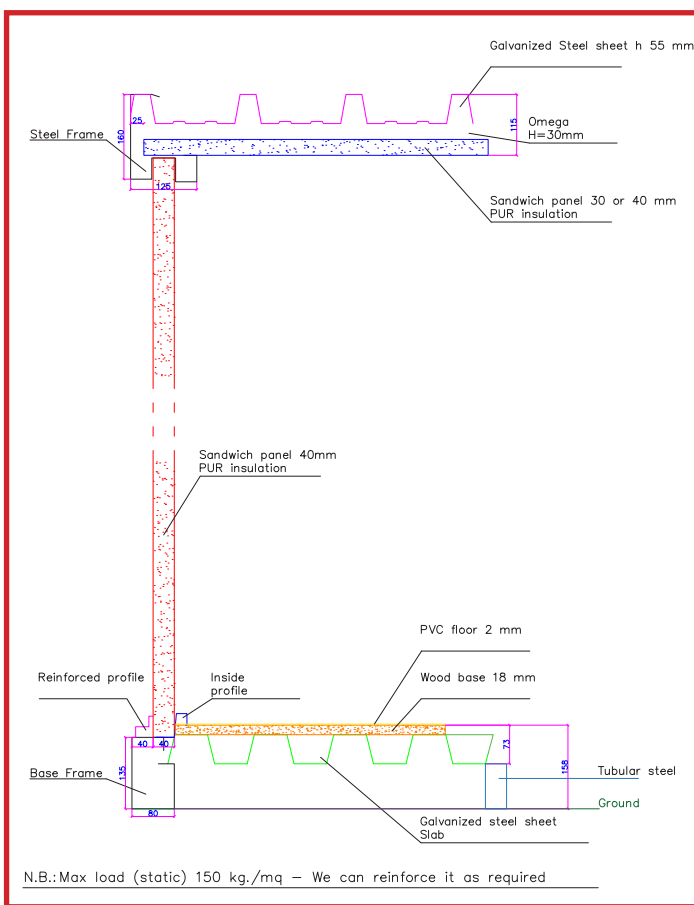


## 2.4 Doors, Windows and Fixtures

Customisable and durable. Aluminium profiles painted (white RAL 9010) complete of all the accessories, Glazing, protection bars, Handle and locks. Other windows and doors are available on request or special design\*.

## 3 THE STRUCTURE

Our prefabs and modular buildings are made using a special innovative lightweight and resistant frame, easy to assemble and easy to join.



#### 4. Flat-pack MODULAR UNITS

The kit includes pre-assembled base and roof, panels, bolts and fittings to be assembled on your site. Only 55cm high (empty room), easy to transport. Up to 10 on a full lorry. Plug-in Electrical system\*.



1. Pre-assembled Base



2. Pre-assembled roof, just ensure bolts



3. Insert panels and fixtures

**DO YOU NEED A SPACE  
SAVING SOLUTION?  
ASK FOR A KIT  
"QUICK FRAME"**



#### 4.1 Modular

Up to 12000 mm long, modular and easy to assemble.





**PARTITION WALL**



**JUST PLUG-IN**

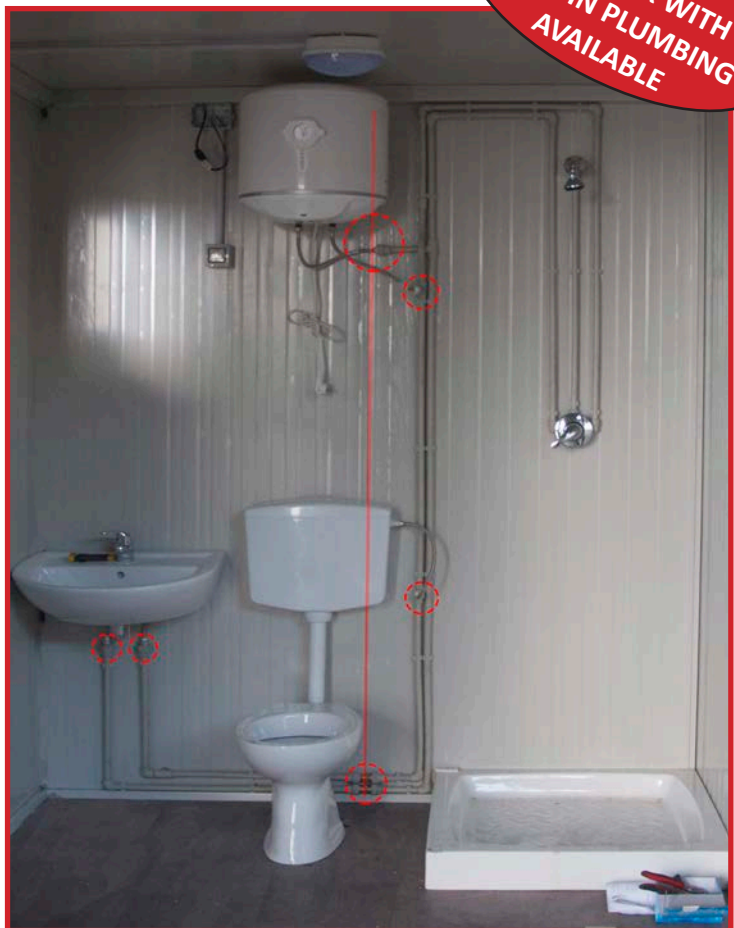
A growing export demand of **offsite buildings**, motivated our company to engineer a portable solution complete of plumbing and **easy to assemble**.

All the plumbing are already **fixed on the panels**, shower included!

Just connect pipes and water!

Try our **time and cost saving** flat-pack toilets!

**FLAT-PACK WITH PLUG-IN PLUMBING AVAILABLE**



5. ACCESSORIES



Optional

Aluminum main door mm 1000x h 2100, ½ glass with protection bars, locks and handles
Aluminum inside door* for partitions, mm 800xh2100 with handles and locks
Partition walls: As required
Aluminum Double Sliding window, mm. 1000xh1200 with 4mm glass and protection bars.
Aluminium hopper Window mm 5000x500 with glazed 4mm glass.
Shower
Wall socket
Light Switch or motion detection
Led or Neon Lights
Forklift pockets in tubular galvanized steel
AC Inverter 9000 BTU
CUSTOMISABLE WINDOWS, DOORS AND FIXTURES uPVC or Aluminum. High Efficiency Rating





### 5.1 Double Pitched Roof\*

Made of galvanized tubular steel, with corrugated galvanized steel sheet or insulated sandwich panels\*. Complete of draining pipes made of galvanized and painted steel. The ideal solution to protect by hot weather and rains.

Double Pitched Roof: sold separately - unassembled kit.



# COUNTLESS POSSIBILITIES

## Free Your Imagination



Extend your buildings, use your own panels or covers and windows!  
Just think and build!





**PORTABLE  
SHOP**



**TOILETS &  
LOCKER ROOMS**



# BOOST YOUR BUSINESS

## Partner with us



Join our fast growing network!  
We will give you support and provide all the necessary to **build**  
your own prefabricated business.

- Web Marketing support
- Strong brand reputation
- Customised affiliate program
- Training and technical support







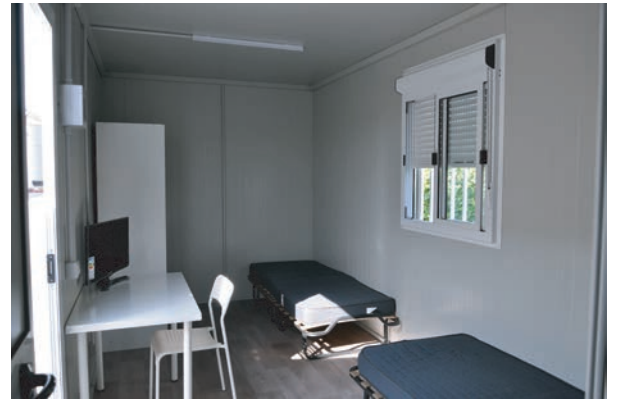
**PORTABLE & MODULAR  
OFF SITE BUILDINGS**



**BOOST YOUR  
TIMBER BUSINESS**



**MOBILE HOMES**



**ACCOMMODATIONS**

**GENERAL CONTACTS:**

[www.mbmodularbuildings.com](http://www.mbmodularbuildings.com)  
[sales@mbmodularbuildings.com](mailto:sales@mbmodularbuildings.com)

**Ph: +39 0 835 30 28 04**

MB MODULAR BUILDINGS is a brand by:

EDILMETAS SRL - VIA PIRELLI

MATERA - ITALY 75100

[www.edilmetas.it](http://www.edilmetas.it)

**FREE AND SECURE  
FULL CATALOGUES  
DOWNLOAD**



**CONTACT  
&  
FREE QUOTE**

